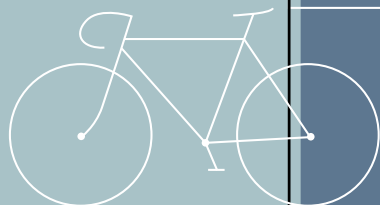
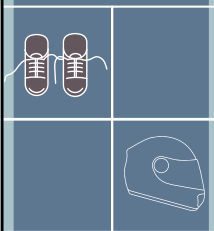
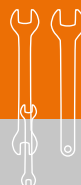
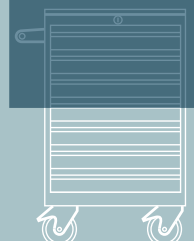


Everything  
Storage



**BISLEY**

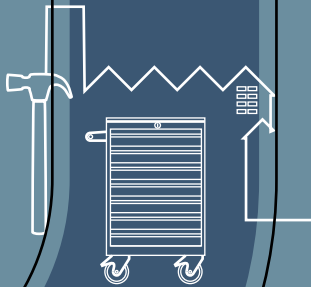
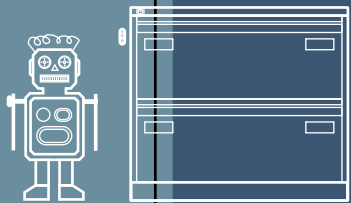
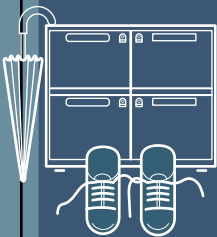
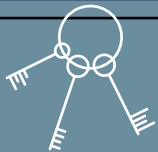
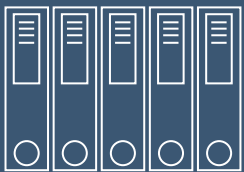


# EVERYTHING STORAGE

When it comes to creating work environments, Bisley is the name people turn to for quality they can trust. For over eighty years, we've been creating well-designed products that are built to last and are made with care to the highest standards.

Here, you'll find an overview of the storage that we offer. Our extensive ranges can help maximise your workspace by providing intelligent and useful solutions. You'll find everything you need to create organised storage which works for you.

More detailed product information can be found on [bisley.com](http://bisley.com)



# SYSTEMS STORAGE

- P.6 LATERALFILE
- P.8 SYSTEMFILE
- P.10 ESSENTIALS
- P.12 GLIDE
- P.14 BE

# PERSONAL STORAGE

- P.18 MULTIDRAWER
- P.20 PEDESTALS
- P.22 CADDY
- P.24 BITE
- P.25 TOWERS
- P.26 LODGES
- P.28 LOCKERS

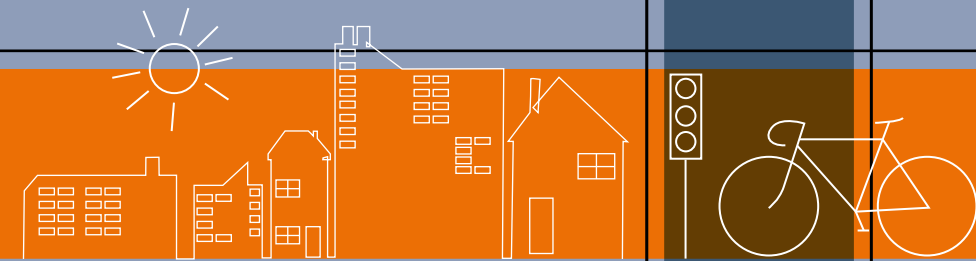
# CLASSICS STORAGE

- P.32 OFFICE FILING
- P.33 CLASSIC FILING
- P.34 BOB
- P.36 SPECIALIST

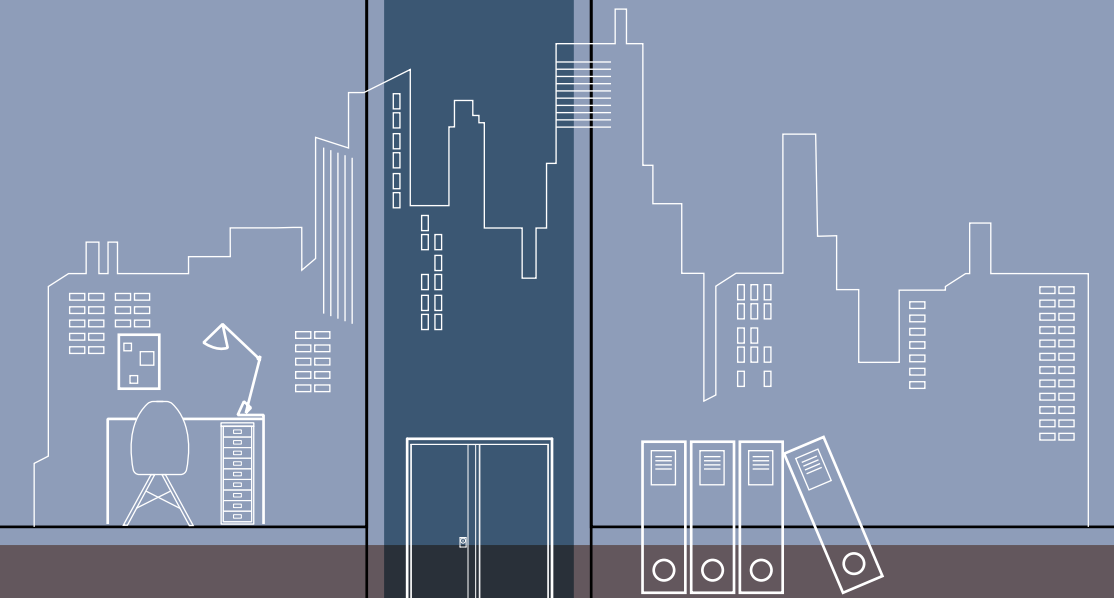
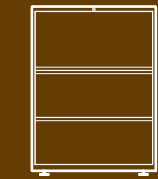
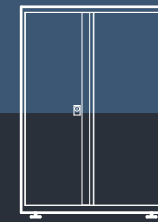
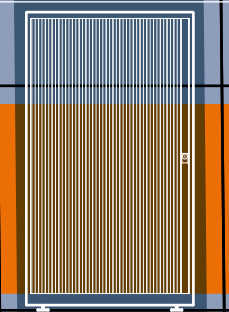
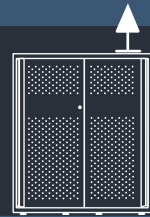
# SPECIALIST APPLICATION

- P.40 HIGH DENSITY STORAGE
- P.42 BISLEY INDUSTRIAL STORAGE

## SYSTEMS STORAGE

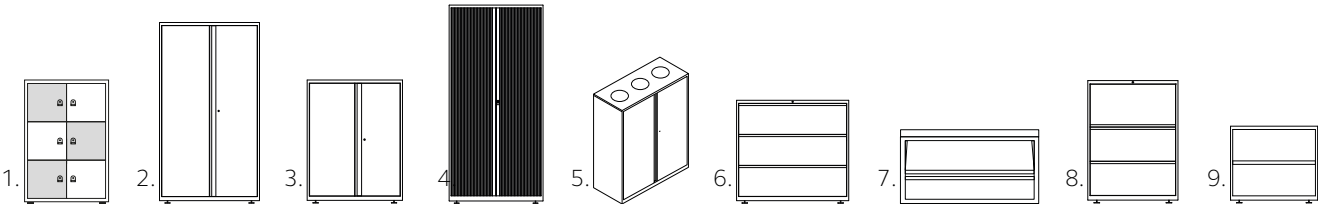


Hardworking storage is vital. We can help you create integrated working environments that enable focused working and which evolve with your changing needs. The ranges featured here provide flexible options to help you design smart storage systems that really work.





# LATERALFILE RANGE



Incredibly versatile, with a superior minimalist design and a seamless finish.

LateralFile is a true furniture systems approach to storage, enabling an entire floorplate to be specified in one product range. The wide variety of options will meet the needs of even the most challenging filing and storage requirements.

The range is stylish and high-quality, with seamfree design and soft-close double-skin doors. It has a strong reputation for timeless aesthetic appeal and is a first choice for architects, designers and end users.

### 1. LODGES

Secure personal storage compartments ideal for use by employees, visitors or remote workers. Different locking options are available: key locking, combination, digital or radio-frequency identification (RFID) locking.

### 2. COAT CUPBOARDS

Available in multiple sizes with a coat rail, shelf, and either solid or ventilated doors.

### 3. TWO DOOR UNITS

Durable two-door cupboards with soft close doors. Ideal for storing multiple types of media.

### 4. TAMBOUR DOOR UNITS

Fully retracting shutter doors, ideal for use in challenging spaces and walkways as an alternative to drawers and cupboards.

### 5. RECYCLING UNITS

Discrete waste management, with three 50-litre recycling bins and hidden storage.

### 6. DRAWER UNITS

Lockable filing drawers for suspension, box and lever arch filing.

### 7. MAGAZINE UNITS

Sloping shelves, ideal for displaying magazines and product literature, and a concealed shelf for storage.

### 8. COMBINATION UNITS

Choose from a range of different closure options including flippers, drawers and cupboard doors.

### 9. BOOKCASE UNITS

Bookcase units with 300mm deep shelves, ideal for displaying literature.

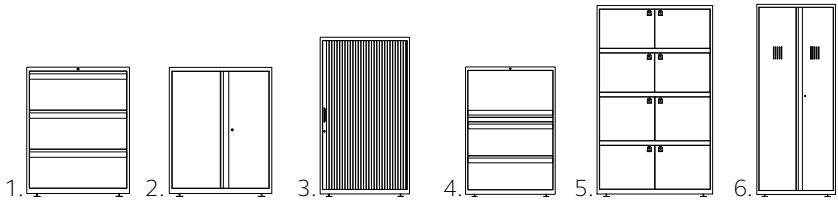
- A range of dimensions available
- Choose from an extensive palette of 34 colours
- Wide range of internal accessories can be purchased
- All LateralFile products have a ten-year guarantee







## SYSTEMFILE RANGE



This popular range represents great value and choice, allowing storage to be tailored to your environment and specific needs.

From drawers to cupboards, tambour doors to combination units, the SystemFile range fits the needs of the modern office. It is flexible, affordable, high-quality and looks great in any environment.

### 1. DRAWER UNITS

Lockable drawers for suspension, box and lever arch filing.

### 2. TWO DOOR UNITS

Durable two-door cupboards. Ideal for storing multiple types of media.

### 3. TAMBOUR DOOR UNITS

Fully retracting shutter doors, ideal for use in small spaces and walkways as an alternative to drawers and cupboards.

### 4. COMBINATION UNITS

Ideal for filing, or for storing multiple media types. Choose from a range of different closure options.

### 5. LODGES

Secure personal storage compartments ideal for use by employees, visitors or remote workers. Different locking options are available: key locking, combination and digital.

### 6. COAT CUPBOARDS

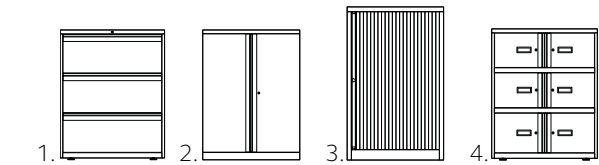
Available in two widths with a coat rail, shelf and ventilated doors.

- Choose from an extensive range of 21 colours
- Plentiful height, width and closure combinations available
- All SystemFile products have a ten-year guarantee





## ESSENTIALS RANGE



This straightforward range makes specifying your perfect workspace refreshingly simple. It is affordable, high-quality and built to last.

The Essentials range includes all the core products that no office can function without, including cupboards, tambour door units, lodges, drawers, desk high storage and combination units.

### 1. DRAWER UNITS

Lockable drawers for suspension, box and lever arch filing

### 2. TWO DOOR UNITS

Lockable, and supplied with combination shelving for lever arch and lateral filing.

### 3. TAMBOUR DOOR UNITS

Fully retracting shutter doors, ideal for use in small spaces and walkways as an alternative to drawers and cupboards.

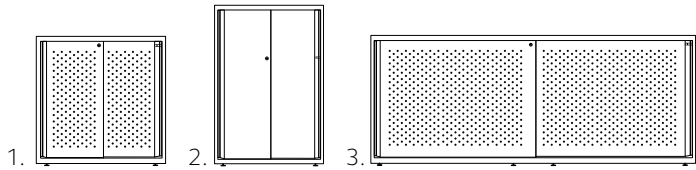
### 4. LODGES

Lockable personal storage compartments ideal for use by employees, visitors or remote workers.

- Choose from Bisley's 12 most popular colours
- Numerous height, width and closure options available
- All Essentials products have a five-year guarantee



# GLIDE



This innovative unit combines clean, unbroken lines with thoughtful details that ensure the sliding doors really do glide.

This high-quality, sliding door storage system is an ideal, space-saving solution for open-plan work environments. You can choose bespoke timber tops, backs and end-cladding, and there's a comprehensive range of optional internal fittings, including roll-out filing frames and drawers. Door options include plain, perforated and acoustic dampening - which is perfect for busy multi-occupancy offices or call centre environments. Glide particularly complements our LateralFile products, but fits well with all of our ranges.

- Choose from an extensive palette of 34 colours
- All Glide products have a ten-year guarantee





## BE

Be is a creative, dual aspect, integrated furniture and storage solution that connects people and the workspace, creating environments that inspire performance.

Perfectly suited for creating subtle space and territory division in open plan settings, Be supports multiple possibilities in the workplace. Whether an area for collaborative working, an individual space for focused desk work, or a relaxed setting for quality break times, Be's flexibility enhances the activities you need to perform.

A workspace you can call your own. Be is designed to be different; using unique colour combinations, mixing wood and steel surfaces, with environments which cater for open and closed storage, and the power to display and perform. With a large selection of sizes, finishes and accessories, Be can create a natural barrier that fits seamlessly in with your working environment; allowing natural light, but separating a room without building walls

Perfect combinations for a connected workspace.

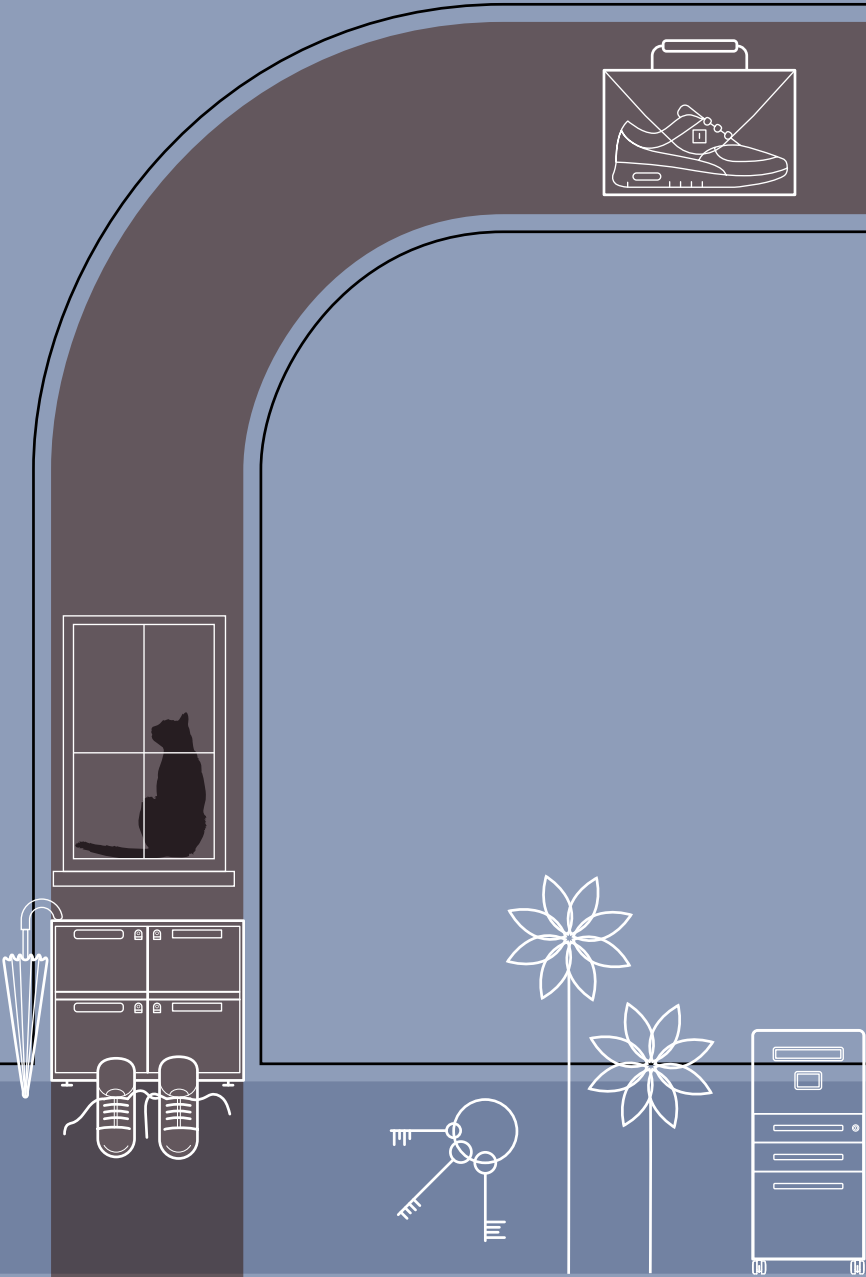




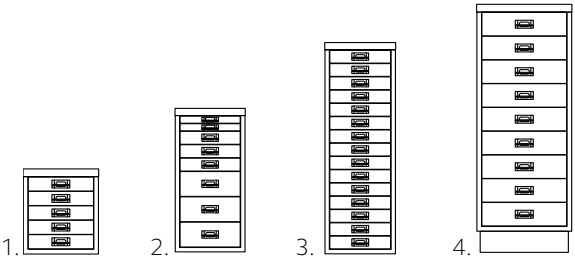
PERSONAL STORAGE



Well-designed storage is fundamental to creating a positive and uplifting workspace. Our personal storage solutions can help free up space, promote productivity and give everyone a sense of belonging. We offer storage options from pedestals to towers to lodges; everything you need to keep items safe, secure and close at hand.



# MULTIDRAWER



The MultiDrawer by Bisley is a design classic that’s as versatile as it is iconic. Compact, robust and available in a broad range of colours, it fits in any setting, from home offices to industrial workshops and everything in between.

Originally designed in 1958 and awarded the Design Guild Mark in 2017, the MultiDrawer can be used to organise all sorts of things in the home, office or workshop. Available in different drawer heights with the option of multi-compartment insert trays for small items. There are three ranges of A4 MultiDrawers as well as an A3 range.

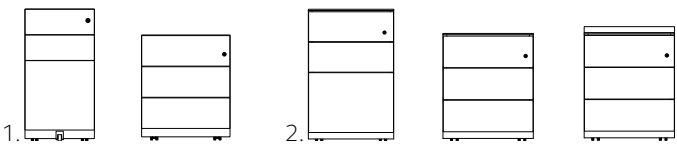
- 1. 12 SERIES
- 2. 29 SERIES
- 3. 39 SERIES
- 4. A3 SERIES

- Choose from a broad range of 21 colours
- All Multidrawer products have a five-year guarantee





# PEDESTALS



Our pedestals provide secure and convenient storage, and are the classic way to keep desks clutter-free.

A range of static or mobile pedestals, all with lockable drawers for secure storage of files or personal belongings. They are available as under-desk drawer space, pull-out storage that extends the work surface, or you can enhance the pedestal further with optional extras. A drag handle option is available, perfect for those that don't sit at the same desk everyday. Or a magnetic seat pad to create a place where colleagues can perch when working in collaboration.

**1. NOTE PEDESTAL**  
Our most popular pedestal, it has a seamed carcase, which complements our SystemFile and Essentials ranges. The unit is available static or mobile, and in a choice of heights, and has additional optional extras such as a seat pad or drag handle.

**2. BISLEY INTEGRATED PEDESTAL**  
This high-quality pedestal is made from a single steel piece with no visible seams, complementing our LateralFile range. The unit is available static or mobile, with additional options such as a seat pad or drag handle.

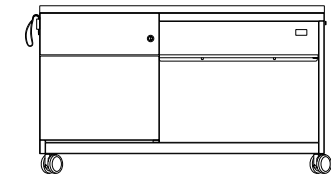
- 1 • Choose from a broad range of 21 colours
- Wide range of internal options available
- 2 • Choose from an extensive palette of a 34 colours
- All pedestals have a five-year guarantee
- Wide range of internal options available







## CADDY



Mobile, secure and multifunctional – the Caddy is storage for the individual at its best.

Caddies perform throughout the workplace; under a desk, against a wall or used to subtly divide open offices. Mounted on castors, means it doesn't have to live in one space, it can be taken to wherever it is needed most, using the 360 drag handle. Adding a seat pad makes it an ideal perch place for impromptu collaboration. The large choice of colours, finishes and fabrics make the Caddy an attractive and flexible addition to any vibrant, agile work space.

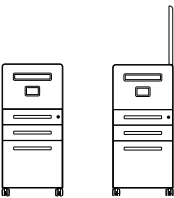
### CADDY

Lockable storage that's easy and safe to move, with two braked wheels ensure it stays in place. Available in either a lefthand or a right-hand configuration with an easily adjustable shelf as standard and optional seat pad.

- Choose from **xx** colours
- All caddies have a five year guarantee



# BITE



Bite is a clever twist on the standard pedestal.

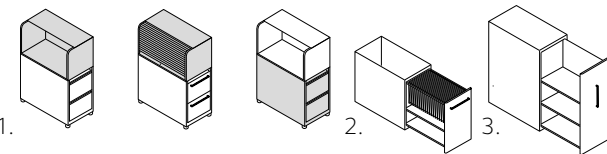
Bite wraps neatly around a desk or workstation providing convenient storage – under-desk storage beneath, and flexible storage above. Space-efficient and mobile, it’s ideal for use in benching environments.

Each Bite comes with a postal slot and business card holder with the option of a cork bulletin board or whiteboard inside the lid.

- Choice of internal accessories and drawer configurations
- Choose from an extensive palette of 34 colours
- All Bite products have a ten-year guarantee



# TOWERS



Towers provide pull-out space for filing and personal items, keeping your workstation completely free of clutter.

Towers are a flexible, secure storage solution, and are available in multiple heights so can be put next to or underneath a desk. They’re ideal for suspension filing, or storing large binders, stationery and personal belongings within easy reach.

1. TOWER PEDESTAL

2. UNDER DESK TOWER

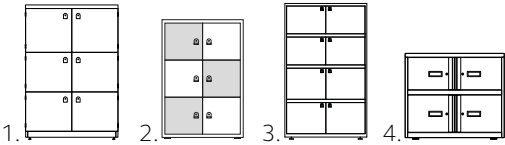
3. FREESTANDING TOWER

- Choose from an extensive palette of 21 colours
- All Towers have a ten-year guarantee
- Multiple configurations are available





## LODGES



The attractive design of our lodges means they are ideal for any workplace environment, including front of house, to provide secure storage for personal items.

Our lodges can be a vibrant addition to any environment as they are available in a wide variety of colours and finishes, and you can choose multi-coloured or timber doors, or a mix of both. As they are perfect throughout the office, reception, and meeting spaces they can be used to create a consistent on brand look. They are available in a range of different designs, so they can be chosen to complement our other products.

### 1. BE LODGE

Our premium Be lodges offer a fully customisable design option for creating a secure and stylish personal storage area. The lodges are available in a combination of lodge doors and display shelves. The Be lodges can be contrafacing, meaning doors can be positioned and opened on either side of the unit. Power or USB charging points can be added. A choice of lock options is available: key, combination, digital or RFID.

### 2. LATERALFILE LODGE

This well-designed product delivers high-quality with soft-close doors. Each compartment offers flexibility, with options such as internal shelves or drawers to maximise the space. Power or USB charging points can be added. The door colours can be chosen individually to reflect brand colours, and a mix of MFC and steel is available. A choice of lock options is available: key, combination, digital or RFID.

### 3. SYSTEMFILE LODGE

Built to last, the SystemFile lodges have been designed to provide high quality and excellent value. They are available in the most popular configurations and colours, and work perfectly with the rest of the SystemFile range. A choice of lock options is available: key, combination, digital.

### 4. ESSENTIALS LODGE

Reliable and affordable, the Essentials lodges are perfectly integrated with the rest of the Essentials range. Available in a variety of sizes and fitted with individual locks and keys, they are an ideal solution in any workplace environment.

- 1 • Choose from an extensive palette of over 34 colours
- All Be Lodges have a ten-year guarantee

- 2 • Choose from an extensive palette of 34 colours
- All LateralFile Lodges have a ten-year guarantee

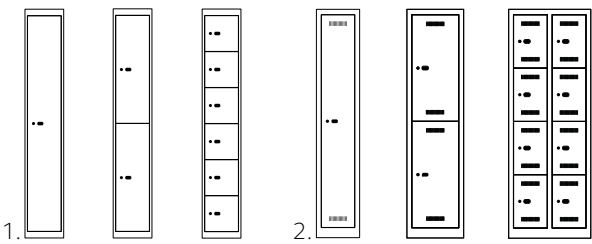
- 3 • Choose from a broad range of 21 colours
- All SystemFile Lodges have a ten-year guarantee

- 4 • Choose from Bisley's 12 most popular colours
- All Essentials Lodges have a five-year guarantee





# LOCKERS



Bisley lockers are sturdy, secure and long-lasting. They are also highly adaptable, easily fitting your organisations needs.

Ideal for back office use, or to equip a changing room area, both the CLK and the Monobloc lockers provide an affordable solution for personal storage. Special attention has been given to the design and quality of these products, such as in the concealed hinges, the clean lines and the welded construction.

There is a choice of dimensions and internal fittings available, as well as a range of locking options, such as key, combination or custom options. As the locker ranges are so flexible, they provide a solution for every scenario.

**1. CLK LOCKER**

The CLK locker unit comes as a single column, and can be ganged together to create large banks of lockers. There are one, two, four and six door options available.

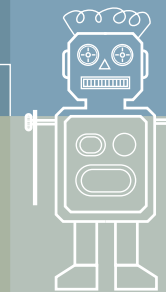
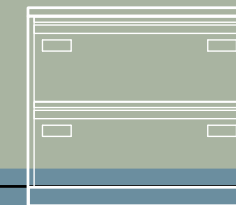
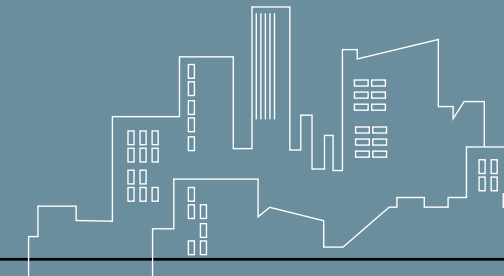
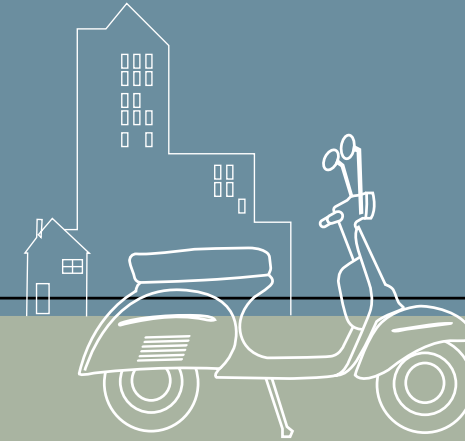
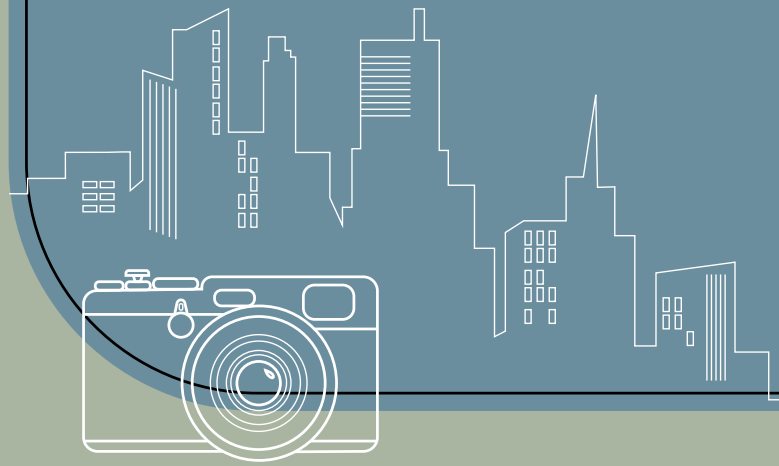
**2. MONOBLOC LOCKER**

The MonoBloc locker is available in banks of up to four columns, and in one, two, three and four door options, and the units bolt on to each other so you can build to fit your organisation's needs exactly. This versatile locker includes ventilation, and there are additional optional features available such as sloping tops and benching.

1 • Choose from a broad range of 12 colours

- 2 • Choose from 12 colours
- All lockers have a five-year guarantee
  - Always light grey internals
  - External doors available in xx colours

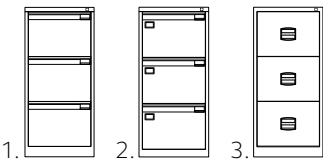
## CLASSICS STORAGE



Precision-engineered and built to last, Bisley is trusted around the world for quality filing and storage solutions. Our iconic products are practical, stylish and ideal for office or home use.



OFFICE FILING



Bisley’s office filing products are durable, robust and stylish.

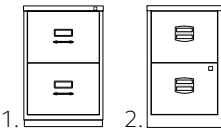
They offer A4 or foolscap suspension filing, and are available with a variety of fronts and finishes.

- 1. BS FILER**  
Practical, high-quality and robust, suitable for A4 or Foolscap suspension filing, with classic handle (as shown in image), or flush fronts available. Ideal for office use.
- 2. AOC FILER**  
Great value foolscap filing cabinet which doesn't compromise on style or security.
- 3. CONTRACT FILER**  
With integrated handles and label holders, this economy filer offers practical suspension foolscap filing storage.

- 1 • Choose from a broad range of 21 colours  
• All BS Filers have a seven-year guarantee
- 2 • Choose from 12 colours  
• All AOC Filers have a five-year guarantee
- 3 • Choose from 12 colours  
• All Contract Filers have a five-year guarantee



CLASSIC HOME FILING



Bisley’s classic home filing ranges provide a practical and versatile way to organise your workspace.

True design classics, these cabinets are stylish and durable, and can be used for suspension filing and personal storage.

- 1. F-SERIES FILER**  
This versatile, lockable storage cabinet offers a combination of suspension filing, stationery and personal storage, with either flush or classic fronts. Suitable for A4, foolscap, American letter and Dutch folio.
- 2. PFA HOME FILER**  
A practical and economical home storage filer, with a combination of both suspension filing and storage drawers. Available with integrated handles or flush front. Suitable for A4 filing only.

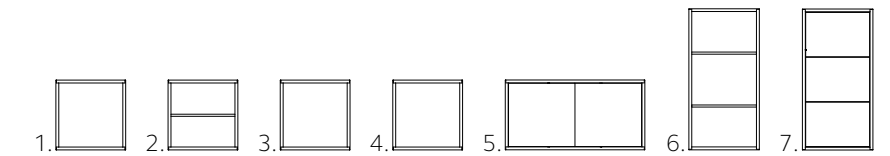
- 1 • Choose from a broad range of 21 colours  
• All F-Series Filers have a five-year guarantee
- 2 • Choose from 12 colours  
• All PFA Home Filers have a one-year guarantee







BOB®



BOB, by Bisley is the beautifully hand-crafted magnetic, modular storage and display system that lets you click, twist and rethink your space.

The vision of award-winning designer, Paul Kelly, in collaboration with Bisley, each BOB unit combines high-quality plywood with a technology-friendly magnetic system, resulting in an effortlessly changeable design that will transform the way you think about storage.

Used in the office or at home, as a dual-sided room divider or against a wall, BOB's beautifully exposed plywood edges and classic white finish create a stunning addition to your space.

**1. SINGLE PASS THROUGH**

The only BOB unit without a back panel - add this to your kit for dual sided access and display space.

**2. SINGLE WITH BACK AND SHELF**

Complete with a removable panel, twist to use as a shelf or a divider.

**3. SINGLE WITH BACK**

Single BOB unit with back panel, ideal for storage and display with shelf positions.

**4. SINGLE WITH BACK, DOOR AND SHELF**

Hidden storage with push to open door front.

**5. DOUBLE WITH SLIDING DOORS**

A double BOB unit with an elegant sliding door offering extra concealed storage.

**6. DOUBLE 2 SHELF UNIT**

Use as a standard shelf unit or flip on its side to use as a divider.

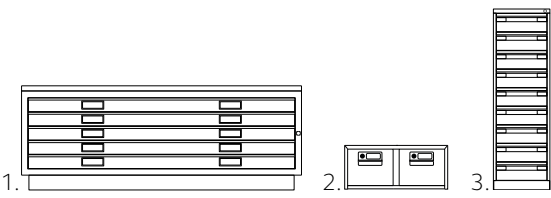
**7. DOUBLE 3 DRAWER UNIT**

Minimalist design, maximising your storage solution with push to open drawers.

- Finished in classic white
- Choose from a selection of pre-confined kits or select individual single units
- Click and twist into your desired design
- BOB has a minimum two-year guarantee



# SPECIALIST



Some items need their own unique kind of storage. Bisley supplies exactly that. Our high-quality units organise, and can help protect, specialist items.

Plan files by Bisley are a favourite with architects, designers and creative agencies, as well as design engineers and building managers, as they are ideal for storing large format documents. They offer complete protection for drawings, plans and samples. Card filing and index cabinets can house everything from media such as CDs and DVDs, to contact cards and small items.

**1. PLAN FILER**  
A flexible option for storing large documents. It is available in either A0 or A1 size and is made up of stackable drawer sections which allows the creation of 5, 10 or 15 drawer units.

**2. CARD INDEX**  
The card index offers stackable desktop storage. There is a choice of single or double drawers.

**3. CARD FILING**  
A tidy way to store media such as CDs and DVDs and other specialist media. As the drawers can be subdivided for greater organisation, it can also be used for things such as parts, components or samples.

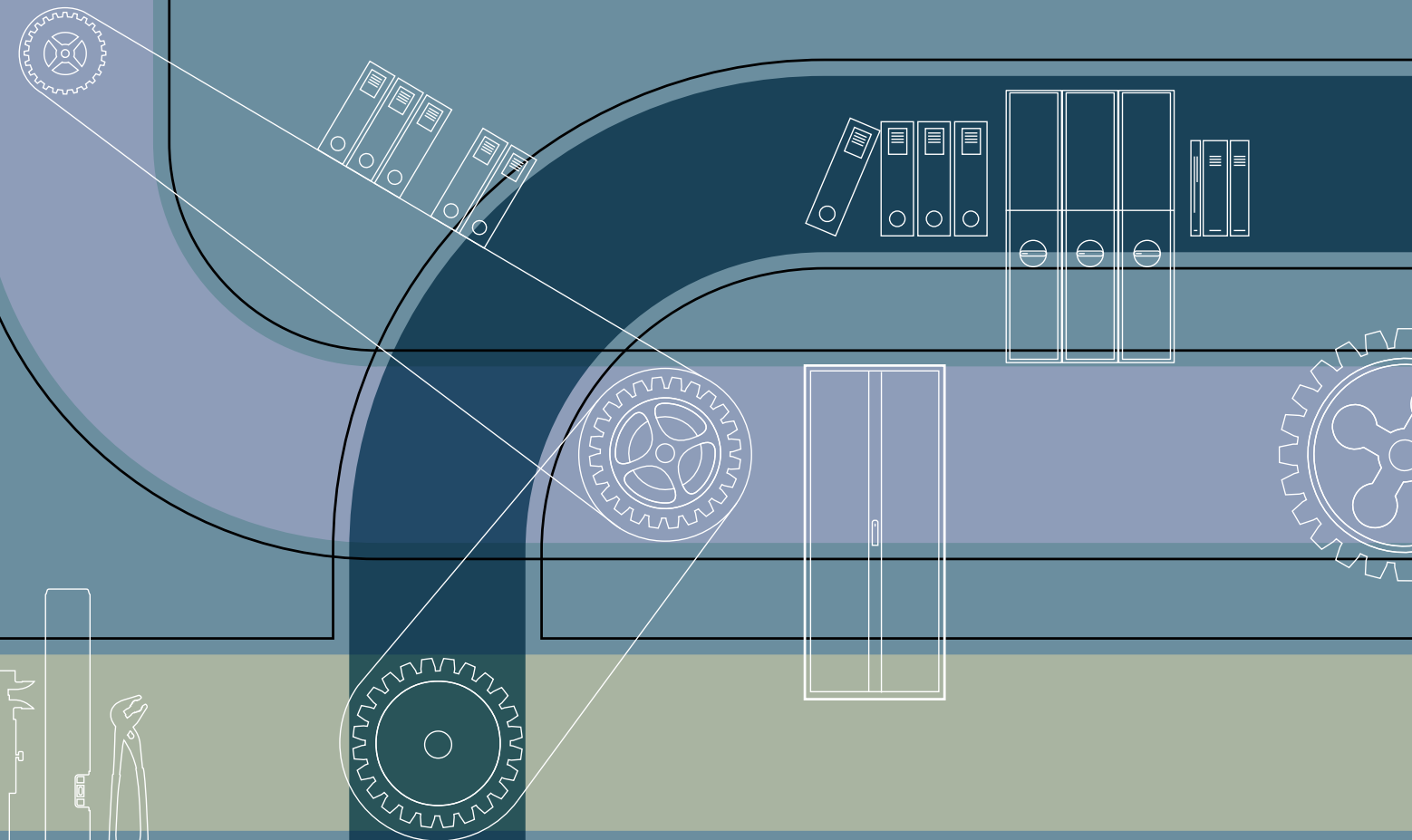
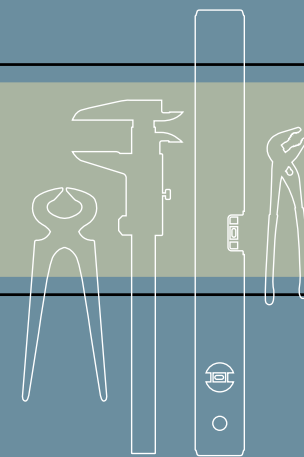
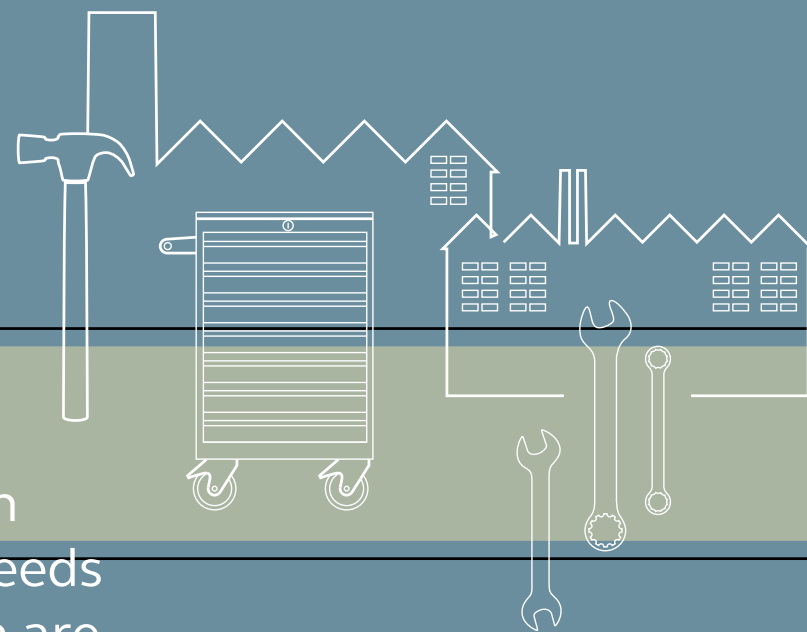
- 1 • Choose from a broad range of 21 colours
- 2 • Choose from 7 colours
- 3 • Choose from 7 colours
  - All Card Filing products have a ten-year guarantee
  - All Plan File products have a of a five-year guarantee





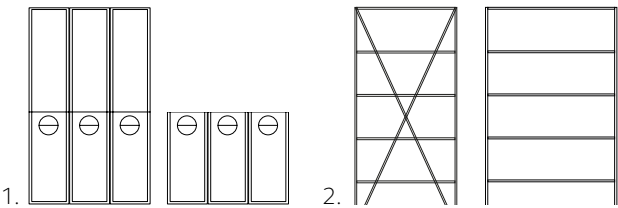
## SPECIALIST APPLICATION

Our specialist options ensure that you can equip your workspace to fit the specific needs of your business. We offer products which are suited for use across the spectrum – strong enough for an industrial workshop, yet also attractive so they fit in at home or in the office. However unique your environment, you'll find storage which is durable and flexible.





# HIGH DENSITY STORAGE



Bisley high-density storage solutions are designed specifically for freeing up space where it’s needed most.

InnerSpace is an expert solution for high-density filing and archiving. It can increase office storage capacity by up to 100% and release valuable floor space. And as it looks great and doesn’t require permanent fixings, it is well suited to front of house or for open plan office spaces.

Economy Shelving is a practical and versatile steel shelving range that can be organised to suit diverse space requirements. Assembly is quick and easy and once assembled the shelving is strong and robust.

**1. INNERSPACE**  
This modular system can cater for all types of media and storage solutions, with a large selection of internal options available including lateral filing, roll-out filing frames, media drawers, reference shelves and garment hanging. We can provide unique and bespoke solutions on request.

**2. ECONOMY SHELVING**  
This shelving system is ideal for both office or industrial settings. For classic office storage, the shelving can accommodate both Foolscap and A4 lever arch and box files.

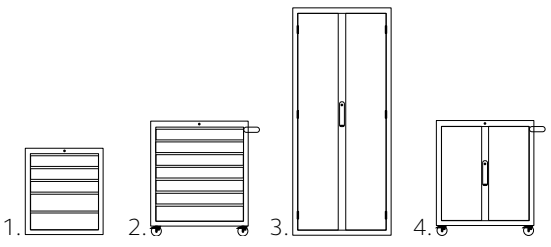
- 1 • A light grey carcase and choose from an extensive palette of 21 colours  
All InnerSpace products have a ten-year guarantee
- 2 • Available in light grey only  
All Economy Shelving products have a five-year guarantee







# BISLEY INDUSTRIAL STORAGE



ToolStor is our industrial storage range, built to take the knocks of everyday use and make it easy to organise and access tools and materials for more efficient working.

The ToolStor range includes everything a busy workspace needs, from tool cabinets to workbenches.

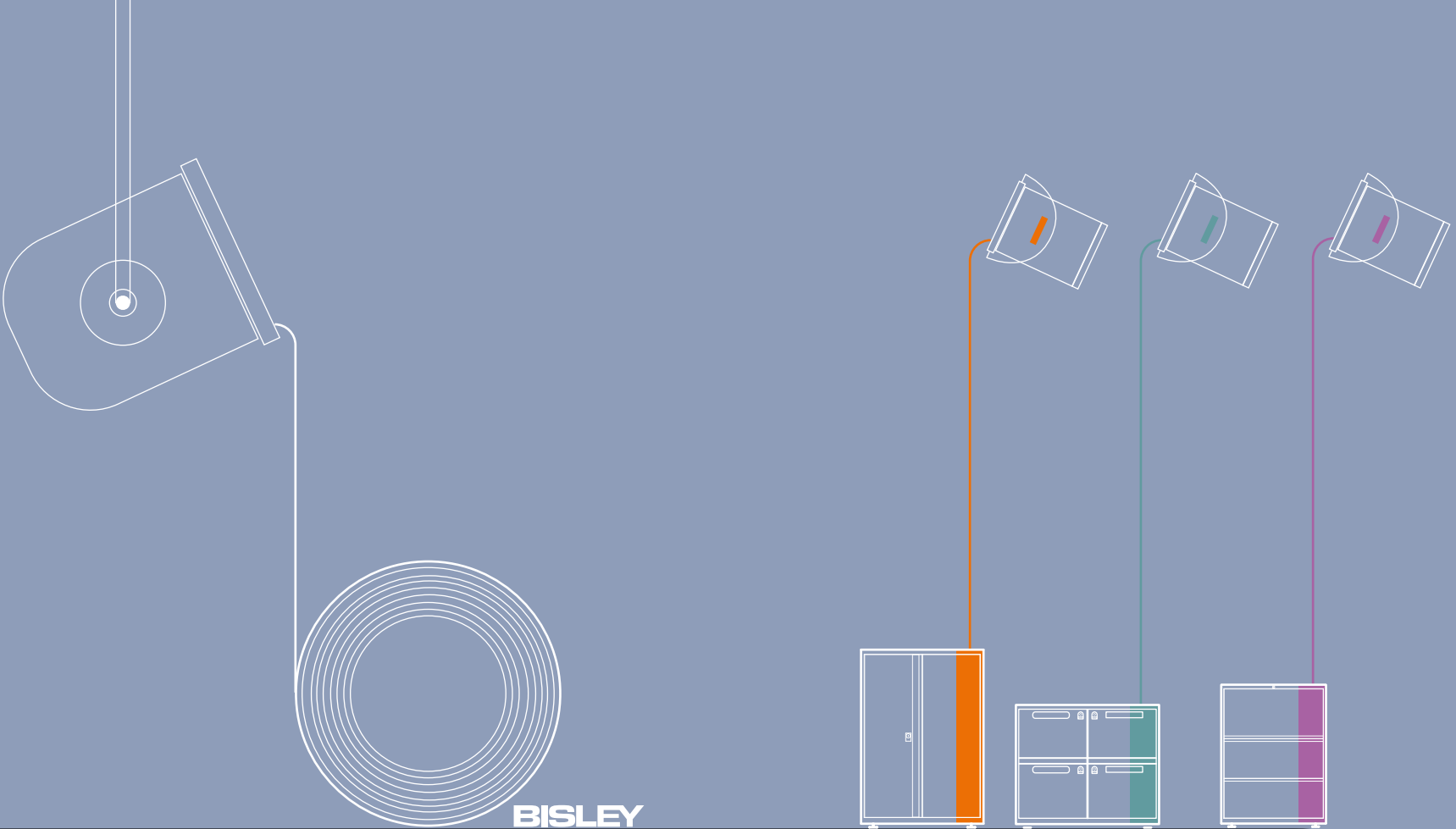
- |   |   |
|---|---|
| <p><b>1. TOOL CABINETS</b><br/>Secure, heavy-duty cabinets available in a range of sizes.</p> <p><b>2. MOBILE STORAGE</b><br/>Easy to manoeuvre and tough enough to store heavy kit.</p> <p><b>3. CUPBOARDS</b><br/>Heavy-duty and secure, with a range of shelving and storage space. Available in a range of sizes.</p> | <p><b>4. WORKBENCHES</b><br/>Flexible, durable and available in several sizes.</p> <p><b>5. ACCESSORIES</b><br/>Stools, chairs, worktops, storage bins, and galvanized shelves.</p> |
|---|---|

- Choose from a palette of 4 colours.
- All Bisley Industrial Storage products have a five-year guarantee.



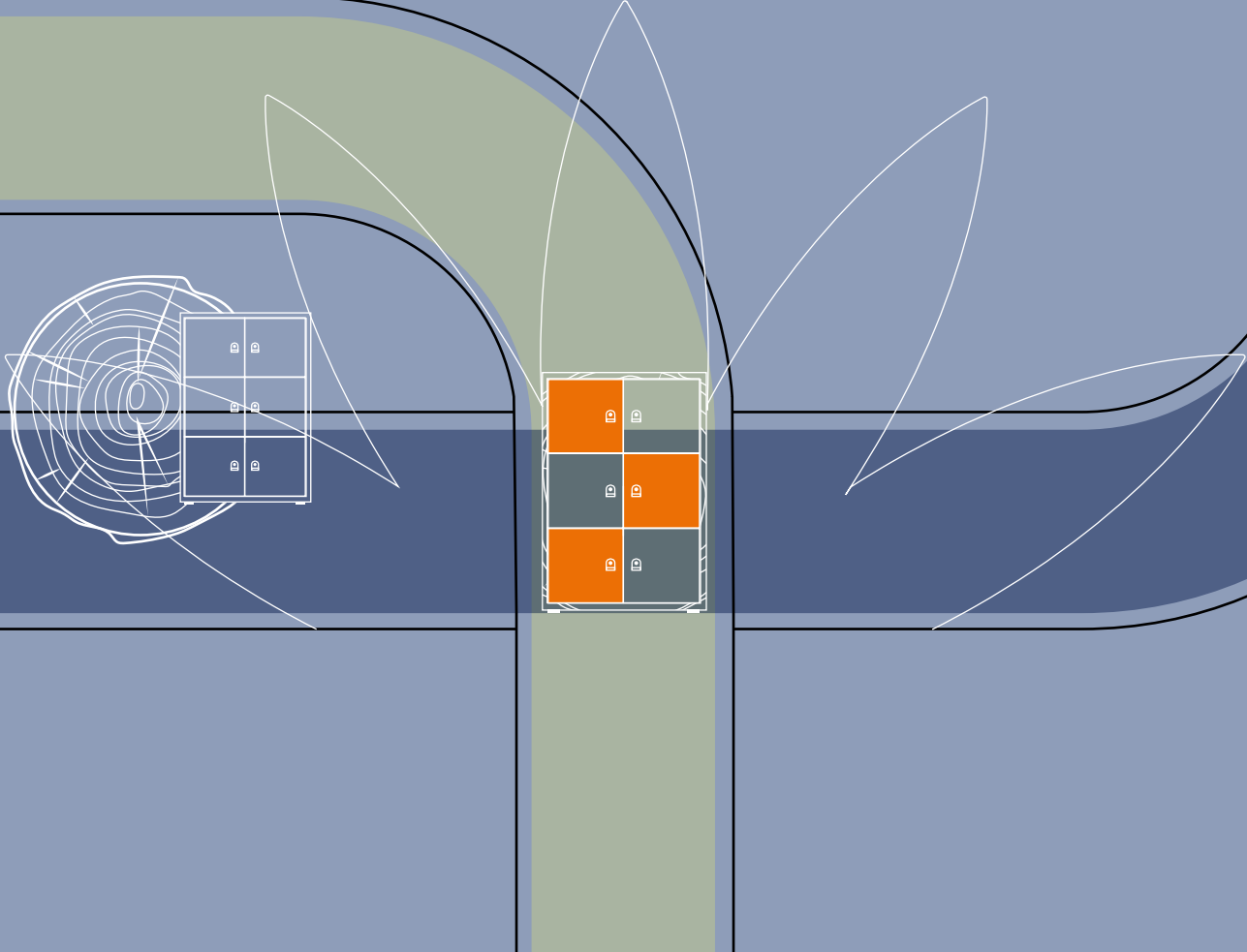
# FINISHING TOUCH

We are Europe’s leading manufacturer of steel storage. We understand how to get the best out of this great material. And we also know how to make it look good. We have a wide range of colours and impressive palettes across our products and we use the most advanced painting equipment.



As well as the steel for which we are known, we have expertise in wood. We understand the possibilities and limitations of a broad range of wood materials. So whatever your requirements, we have the skills.

We create products that are as attractive as they are useful, and will continue to look good for years to come.





# QUALITY THAT LASTS

We are Europe’s leading manufacturer of steel storage. We understand how to get the best out of this great material. We also know how to make it look good. We have a wide and impressive range of colour palettes across our products and we use the most advanced painting equipment. As well as the steel for which we are known, we have expertise in wood. We understand the possibilities and limitations of a broad range of wood materials and veneers, so whatever your requirements we have the skills.

# ENVIRONMENTAL RESPONSIBILITY

As a manufacturer, we take our responsibilities very seriously and sustainability runs through everything we do. We produce in high-quality steel and wood, ensuring our products are strong, resilient and stand the test of time. As well as having a long lifespan due to steel’s durability, if a product does eventually need to be disposed of then steel is 99% recyclable and doesn’t lose its quality when recycled.

# ENGINEERED AROUND YOU

People come first at Bisley. So whether you’re an end customer, dealer, architect or designer, you benefit from a service that’s engineered around you. If you need help with planning anything from a bespoke design to an entire building layout, we have a dedicated design team ready to support you. We can talk you through all the options – from dimensions and accessories, to colours and finishes, or even assist with putting together a precise design specification. Whatever your project, we’ll put our expert knowledge to work for you, helping you get the best from Bisley products.

We regularly accommodate bespoke requirements – from having existing Bisley products finished in an organisation’s brand colours, to resizing storage units to match a specific layout. We’re also able to design, manufacture and deliver entirely bespoke products. Whatever you need, we’ll take care of it.

# MANUFACTURING EXCELLENCE

We’ve refined our expertise over the decades, but we have not stood still. We have always embraced change, to offer innovative solutions to meet the evolving needs of our working world. Our products benefit from our knowledge and from the latest technologies, to ensure that we continue our manufacturing excellence.

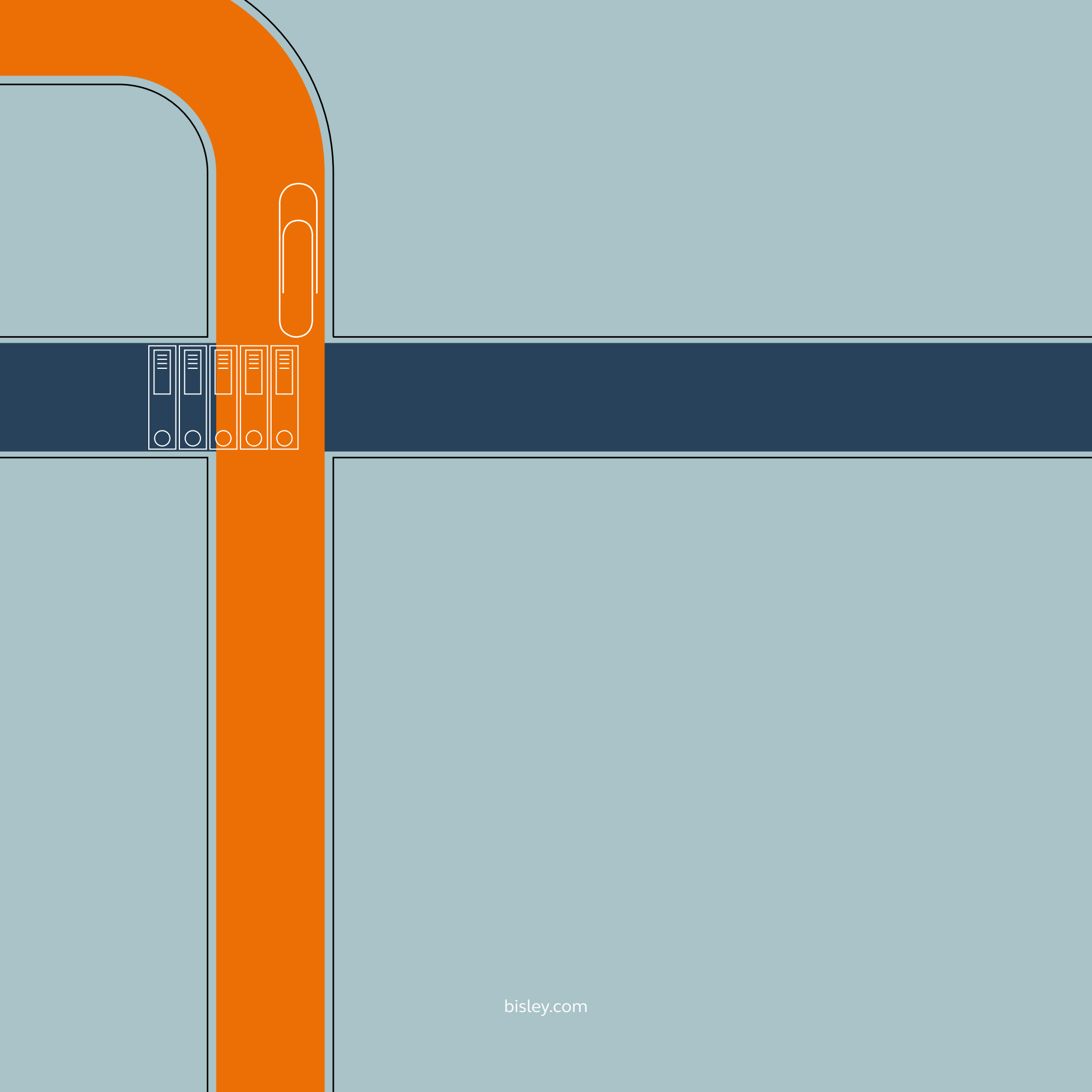
Precision-engineered and built to last, Bisley is trusted around the world for quality filing and storage solutions. We adhere to the highest standards and all our furniture is made with care. That’s why you can count on a Bisley product for years to come.

To find out more visit [bisley.com](https://www.bisley.com)

BISLEY IS A REGISTERED TRADEMARK OF F.C. BROWN (STEEL EQUIPMENT) LTD.

DESIGNED BY SO-DESIGN.CO.UK







Ihr Fachhandelspartner:

**weber** büro- & objekteinrichtung GmbH  
Dieselstr. 11a  
86368 Gersthofen  
T. 0821.262352-1  
F. 0821.262352-2

E. [info@weber-einrichtungen.de](mailto:info@weber-einrichtungen.de)  
[www.weber-einrichtungen.de](http://www.weber-einrichtungen.de)



**weber**  
büro- & objekteinrichtung



PROJEKT. NEUES BÜRO